

# **Mattole Restoration Council**

## **Request for Proposals**

### **CEQA Environmental Compliance for the Mattole Resilience, Education and Research Center Project**

#### **1. Project Description**

---

The Mattole Restoration Council is soliciting proposals for the completion of CEQA environmental compliance (likely through the IS/MND (Initial Study/Mitigated Negative Declaration) process for the Mattole Resilience, Education and Research Center Planning Project. The project will improve native plant, fish, and wildlife habitats on 78 acres, as well as adjacent instream habitat on the mainstem Mattole and Lower North Fork Mattole River, while improving public access to conserved land. The project is in the remote unincorporated community of Petrolia, California.

Project components include:

- Nonnative and invasive plant control on 78 acres, consisting of:
  - ~3.5 acres of mechanical removal of Himalayan blackberry and Scotch broom
  - ~1 acre of Himalayan blackberry vegetation management via livestock grazing
  - Hand pulling of invasive plants scattered throughout 78 acres
  - Large tree removal and mechanical processing on ~2.5 acres (Eucalyptus and Monterey pine)
- Off-channel habitat enhancement for listed salmonids
- Wetland habitat enhancement for listed salmonids
- Stream restoration
- Riparian habitat enhancement on 10+- acres of mainstem Mattole River channel
- Prescribed and cultural burning
- ~0.5 mile ADA trail/emergency access road construction
- Installation of trail bridges at 3 sites
- Installation of interpretive signage
- Visitor access and parking area development in 4 locations
- Demolition of existing dilapidated structure (1,920 sq. ft.)
- Construction of new facility on footprint of previous structure (1,920 sq. ft.)
- ADA access improvements (paved parking area and paths) on site

#### **2. Scope of Work**

---

Task 1: Complete CEQA environmental compliance through the IS/MND for Mattole Resilience, Education and Research Center Planning Project.

- Complete surveys of botany, wildlife, and wetland resources as needed (prior botanical and wetland surveys exist; prior bird survey of partial project area exists)
- Prepare and complete all environmental review documents.
- Submit environmental review documents to CEQA lead agency.
- Respond and address edits from CEQA lead agency.

Duration:

All tasks outlined in the Scope of Work shall be completed by 09/01/2026, with potential for extension through January 2027.

## 1. Project Information

---

**Project Name:** Mattole Resilience, Education and Research Center Planning Project (CEQA)

**Project Location:** The Mattole Resilience, Education and Research Center Planning Project location is a 78-acre site, centrally located in the remote community of Petrolia in Humboldt County.

**Project Funders:** Project funding is provided by CA Strategic Growth Council NTE \$45,000

**Project Dates:** Task 1 work will take place between 5/05/2026 – 9/1/2026

## Project Proposal Timeline

4/16/2026: Request for Proposals

4/29/2026: Proposals are due at 9:00 AM on 4/28/2026. Email completed proposals to [erp@mattole.org](mailto:erp@mattole.org)

5/1/2026: Award Notification

5/05/2026: Contract Execution

5/05/2026 – 9/1/2026: Scope of Work for this RFP

## 2. Bidding Information

---

### Project and Proposal Questions

Please email project and proposal questions to [erp@mattole.org](mailto:erp@mattole.org) by 4/21/2026

### Bid Proposal

The proposal must include the following information in one PDF document:

- 1) Business Name, address, email, and phone number
- 2) A completed bid and estimated timeline
- 3) Detail experience completing CEQA in North Coast California ecology

### Bid Selection

Contractor will submit a complete proposal. After reviewing proposals, the contract will be awarded to the Contractor that a) provides the most cost-effective pricing b) demonstrates experience with CEQA compliance and c) is available to complete work in a timely manner. Specific bid selection criteria will include:

- Provided all requested documents for the solicitation
- Demonstrates experience with projects of similar scope and with similar components
- Reputation, history with organization, and ease of working with
- Personnel working on the project are qualified
- Total estimated cost compared to other bids
- References
- Minority/Women owned

The awarded, the contract will be between the Mattole Restoration Council and chosen Contractor. Contractor will be paid upon completion of project tasks and after MRC receives payment from CA Strategic Growth Council. Contractor(s) may sub-contract portions of the proposed work.

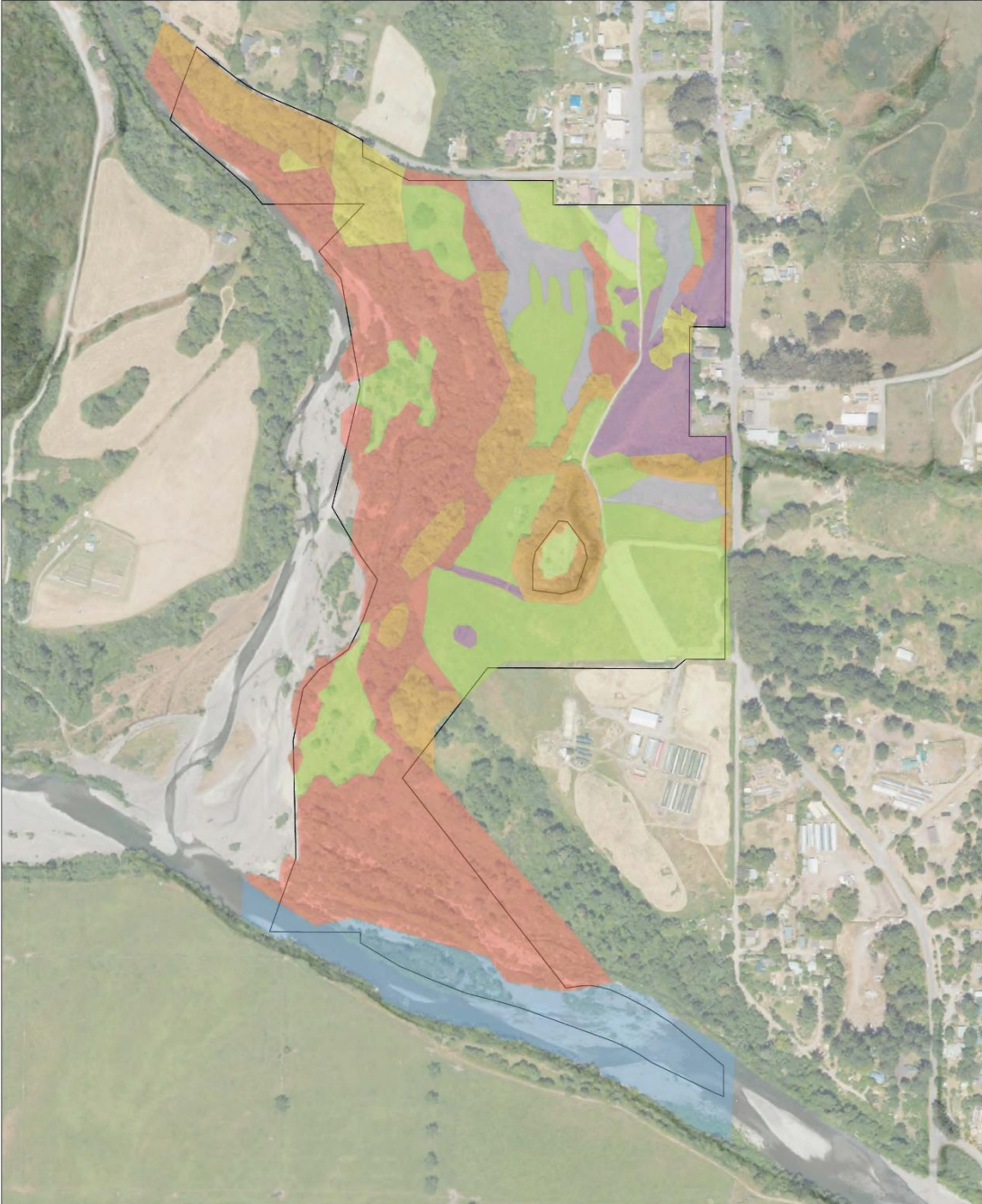
## 3. Bid Sheet

---

Bid Item	Item Description and Instructions
1	Complete IS/MND environmental compliance for 78 acres of the project area including pre-implementation surveys for the Project Specific Analysis (the maps below are draft/conceptual and for reference only.)

# 4. Draft Project Maps

## Mattole Resilience, Education & Research Center Vegetation Coverage Assessment Draft Map - January 20, 2026



- Cottonwood & Willow-Dominated Riparian Forests
- Eucalyptus Forests
- Grasslands
- Himalayan Blackberry & Other Invasive Plant-Dominated Areas
- Mixed Evergreen Forests
- Mattole River Active Channel
- Wetlands
- MRERC Property Boundary

N

Scale: 1:5,400

1 inch equals 450 feet

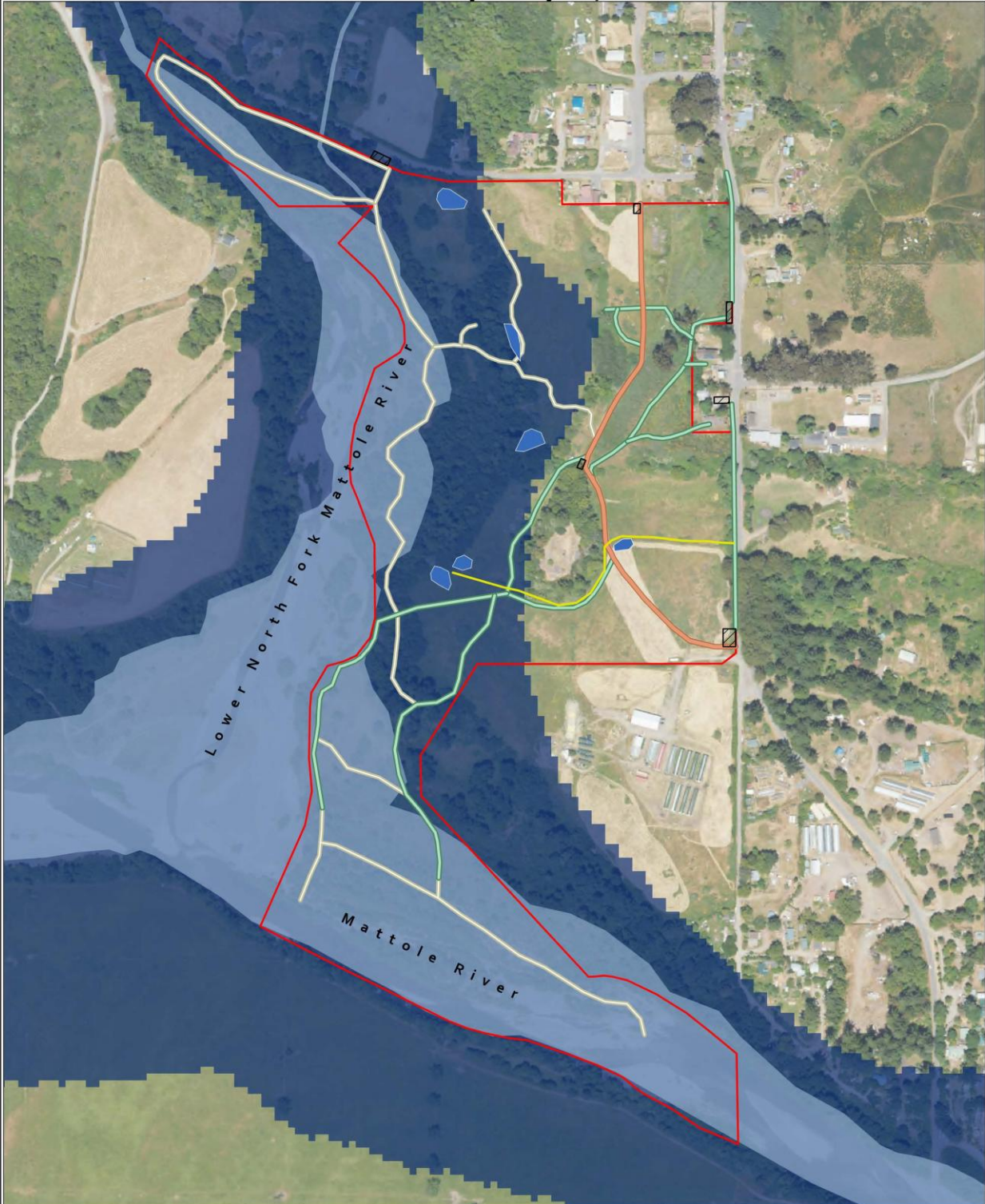
0      500      1,000 Feet

Mattole Restoration Council  
29230 Mattole Road,  
Petrolia CA. 95558-0160  
(707)629-3514 Office  
mattole.org  
Map Info: miles@mattole.org



Sources: Esri, TomTom, Garmin, FAO, NOAA, USGS, © OpenStreetMap contributors, and the GIS User Community, Esri, CGIAR, USGS, USGS  
Author: Miles Kinman, January 2026  
Map File: C:\GIS Data\Projects\MFI\MFI\_Wetlands\MFI\_Wetlands.aprx

**Mattole Resilience, Education & Research Center  
Off-Channel Salmonid Habitat Restoration Sites  
Draft Map - July 22, 2025**



- Salmonid Habitat Enhancement Sites
- FEMA 1% Annual Chance Flood Hazard
- Wetlands: National Wetlands Inventory
- Humboldt County Ditch
- Seasonal Trail
- Year Round Trail
- ADA/Emergency Route
- Acreage Under Acquisition
- Parking - Including ADA

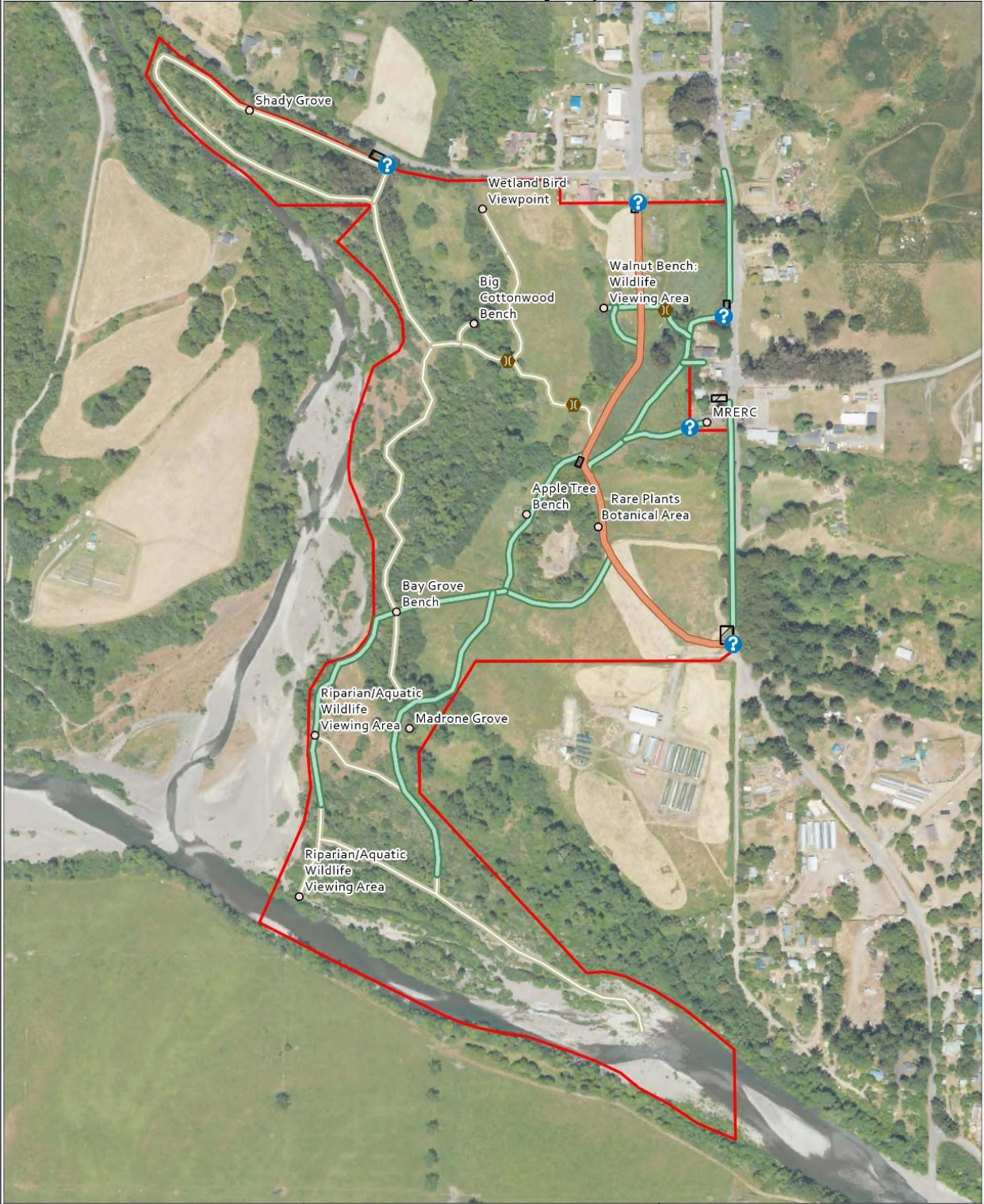


Mattole Restoration Council  
29230 Mattole Road,  
Petrolia CA. 95558-0160  
(707)629-3514 Office  
mattole.org  
Map Info: miles@mattole.org




Source: FEMA, Esri, CGIAR, USGS, Sources: Esri, TomTom, Garmin, FAO, NOAA, USGS, © OpenStreetMap contributors, and the GIS User Community, USGS  
Author: Miles Kinman, July 2025  
Map File: C:\GIS Data\Projects\MFI\MFI\_Wetlands\MFI\_Wetlands.aprx

# Mattole Resilience, Education & Research Center Public Access & Recreation Sites




-  Bridge
-  Interpretive Sign
-  Point of Interest
-  Seasonal Trail
-  Year Round Trail
-  ADA/Emergency Route
-  Acreage Under Acquisition
-  Parking - Including ADA



N

Scale: 1:5,400

1 inch equals 450 feet



0      500      1,000 Feet

Mattole Restoration Council  
 29230 Mattole Road,  
 Petrolia CA. 95558-0160  
 (707)629-3514 Office  
 mattole.org  
 Map Info: miles@mattole.org



Data: USGS, Esri, CGIAR, USGS, Sources: Esri, TomTom, Garmin, FAO, NOAA, USGS, © OpenStreetMap contributors, and the GIS User Community  
 Author: Miles Kinman, July 2025  
 Map File: C:\GIS Data\Projects\MFI\MFI\_Wetlands\MFI\_Wetlands.aprx